

CONNECT!

 [/commoncausemn](https://www.facebook.com/commoncausemn)

 [@commoncausemn](https://twitter.com/commoncausemn)

 www.commoncause.org/minnesota

 [@ourcommoncause](https://www.instagram.com/ourcommoncause)

COMMON CAUSE MINNESOTA'S

2023

GUIDE

VOTER



WWW.COMMONCAUSE.ORG/MINNESOTA





TABLE OF CONTENTS

- About Common Cause..... 2
- About this voter guide..... 2
- How to vote..... 3
 - Voter eligibility..... 3
 - Voting options..... 3
 - Special circumstances..... 4
 - How to vote..... 3
- Why should you vote?..... 5
- Government & Elected Officials..... 6

Who are they & how do they impact your life?

 - Elected officials..... 6
 - Local & Municipal..... 6
 - State..... 6
 - National..... 7
 - Non-elected Officials..... 7
 - State judicial branch..... 7
 - Federal Judicial branch..... 7
 - How do branches interact?..... 8-10
- Information about 2023 elections..... 11-12



ABOUT COMMON CAUSE

Common Cause Minnesota is a nonpartisan 501c(3) & 501c(4) organization. We believe that we're better off when people from all walks of life participate in self-governance. We all deserve a voice in shaping the future for our families and communities. Join us to work toward solutions that reduce the influence of money in politics, hold public officials accountable, create a more representative government, and ensure that every vote counts so our elections reflect the will of the people.

ABOUT THIS VOTER GUIDE

This voter guide is meant to give voters a nonpartisan look at everything involving Minnesota elections. We will provide information about:

- How to vote
- Why voting matters
- What Government & Elected Officials do & how they impact your life
- Information about 2023 elections

In this guide we won't tell you who to vote for; our only goal is to give a grassroots perspective to voting, elections, and participation in democracy.



HOW TO VOTE

There are multiple ways to exercise your right to vote. This section includes information on different ways you can vote & the steps you need to take before you can vote.

VOTER ELIGIBILITY

To vote you must be:

A United States Citizen

At least 18 years old on Election Day

A resident of Minnesota for 20 days

VOTING OPTIONS

In person on Election Day

- **Date:** Nov. 7, 2023
- **Hours:** 7 a.m. - 8 p.m. (Please note: During smaller election years these hours may vary. Check your polling place hours at sos.state.mn.us)

Early by mail

- You can apply to have an absentee ballot sent to you by visiting sos.state.mn.us

Early in person

- Absentee voting locations are open during normal business hours starting 46 days before Election Day.

Agent Delivery

- In special circumstances, you can qualify for agent delivery. You can learn more at the sos.state.mn.us

SPECIAL CIRCUMSTANCES

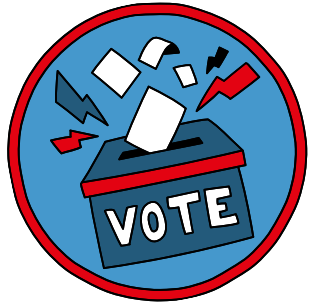
- You can vote while under guardianship unless a judge specifically has revoked your right to vote.
- You cannot vote if a court has ruled that you are legally incompetent
- Those who were previously convicted of a felony & have completed their sentence are now eligible to vote

HOW TO VOTE

1. Register to vote or check your voter registration status.
 - In Minnesota you can register to vote on paper 21 days prior to Election Day, online, & on Election Day. You can register to vote & check your voter registration status at sos.state.mn.us
2. Make a voting plan
 - Research what candidates will be on your ballot at sos.state.mn.us & find which candidates suit your preferences
3. Vote!
 - Find your polling place at sos.state.mn.us or mail in your ballot (please note that your mail in ballot must be received before close of polls on Election Day.

WHY SHOULD YOU VOTE?

It may be easy to discount the importance of voting. Many think that their single vote doesn't matter in the grand scheme of things. **This is not true!** Voting is a right that people have worked tirelessly to defend, & voting impacts your life more than you may think!

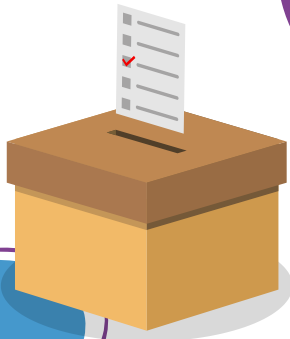


When you vote, you are taking an active role in deciding on policies & issues that impact your and your community's daily life!

Healthcare, community safety, education, jobs, taxes, immigration policies, voting rights and many more aspects of your life is heavily impacted by your elected officials. Voting is a major way you can show the government what approaches to these policies you support!



When you vote in any election, whether it be at a local, state, or national level you are helping create what the future will look like for yourself, your friends, your family, your neighbors, & your community!



WHO ARE ELECTED & GOVERNMENT OFFICIALS & HOW DO THEY IMPACT YOUR LIFE?

ELECTED

LOCAL & MUNICIPAL

- **CITY COUNCIL:** Sets city policies & ordinances
 - Example: Implementing a behavioral response unit to respond to non-violent & behavior related 911 calls rather than sending a police response.
- **MAYOR:** The top executive in your city, responsible for overseeing all city functions.
 - Example: Managing the city budget & allocating funds to green initiatives.
- **SCHOOL BOARD:** Manage schools in their district from rules for organization, to setting curriculum standards.
 - Example: Securing funding for new books for the school library.
- **COUNTY COMMISSIONER:** Responsible for the operation of your county & the delivery of county services
 - Example: Overseeing planning & zoning for a new housing development in your county.
- **SHERIFFS:** Establish policies about anything related to the operations of the police
 - Example: Deciding police policy for use of force, cooperation with ICE, & arrest priorities.

STATE

- **GOVERNOR:** The chief executive in the state, responsible for overseeing all state functions.
 - Example: Deciding whether or not a bill approved by the legislature is signed into law.
- **HOUSE OF REPRESENTATIVES & SENATE:** These two bodies make up the state legislature. They are the states lawmaking bodies & work on state issues.
 - Example: Introducing, voting, & approving a law restoring the right to vote for those previously convicted of a felony.
- **SECRETARY OF STATE:** Manages & runs elections throughout the entire state.
 - Example: Implementing protections for poll workers & voters.
- **ATTORNEY GENERAL:** The chief legal officer of the state.
 - Example: Providing legal assistance to a rural county prosecutor in a case with major felonies.
- **STATE AUDITOR:** Oversees financial activity of local government by performing audits.
 - Example: Investigating a report made by a constituent surrounding misappropriation of funds.

NATIONAL/FEDERAL

- **PRESIDENT:** The head of state & Commander-in-chief of the armed forces
 - Example: Deciding to sign a bill sent by Congress that provides emergency relief to victims of a hurricane.
- **Congress:** Made up of two bodies, the House of Representatives and Senate. They are the country's lawmaking bodies & work on policies relating to their constituents.
 - Example: Introducing, voting, & approving a law to relieve student debt.

NON-ELECTED

STATE JUDICIAL BRANCH

- **DISTRICT COURT:** Interprets the law & applies it to the fact of specific cases. They may hear criminal, civil, probate, juvenile, or family law cases, & small civil disputes
- **COURT OF APPEALS:** Reviews district court decisions for errors of law and sufficiency of evidence to support a verdict.
- **MINNESOTA SUPREME COURT:** Hears criminal and civil appeals from the district court & court of appeals, issues writs that require trial judges or public officials to take or refrain from taking an action, handles appeals from special statutory courts, & hears important original actions provided by statute.

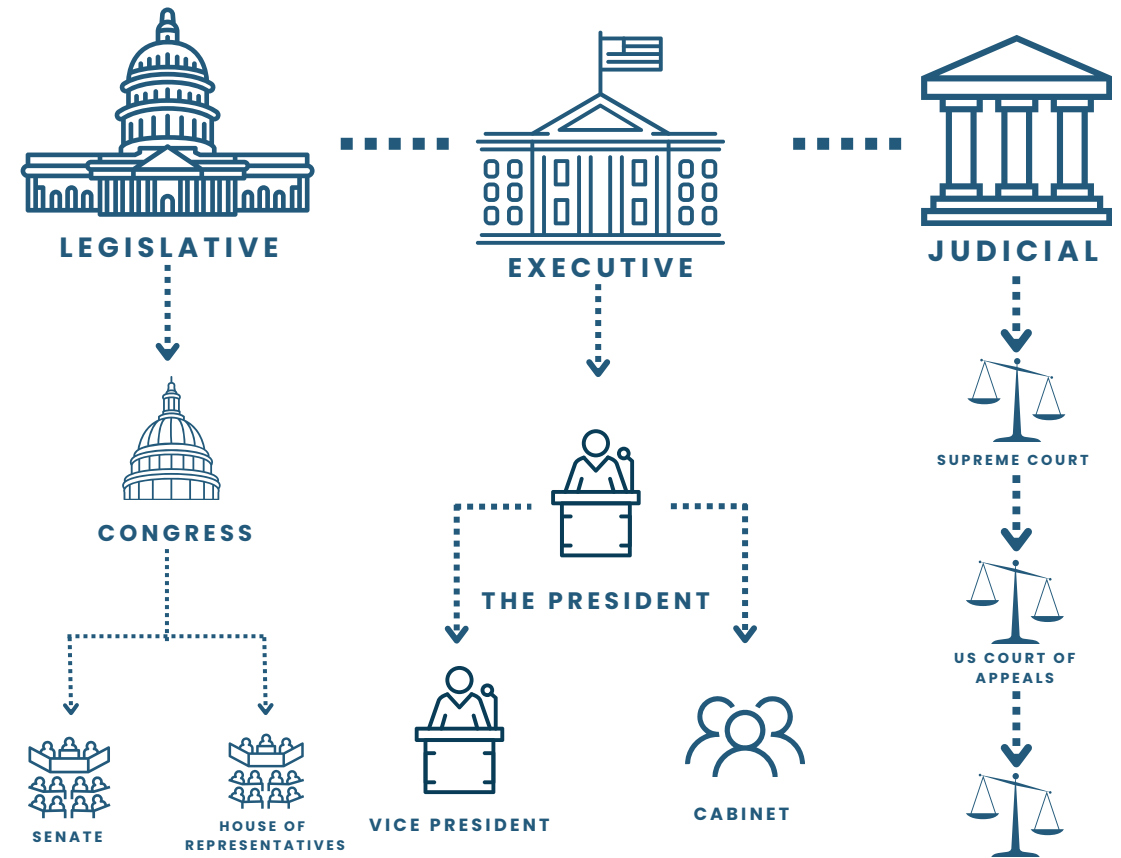
NATIONAL/FEDERAL JUDICIAL BRANCH

- **COURT OF APPEALS:** The 13 courts that sit directly beneath the Supreme Court. They determine whether or not the law has been correctly applied in the trial court. They hear challenges to district court decisions & appeals from federal administrative agencies.
- **SUPREME COURTS:** The highest court in the United States. Their decisions cannot be appealed to any authority as it is the final judicial arbiter in the United States on matters of federal law. The Court's task is to interpret the meaning of a law, to decide whether a law is relevant to a particular set of facts, or to rule on how a law should be applied. Lower courts are obligated to follow the precedent set by the Supreme Court when rendering decisions.



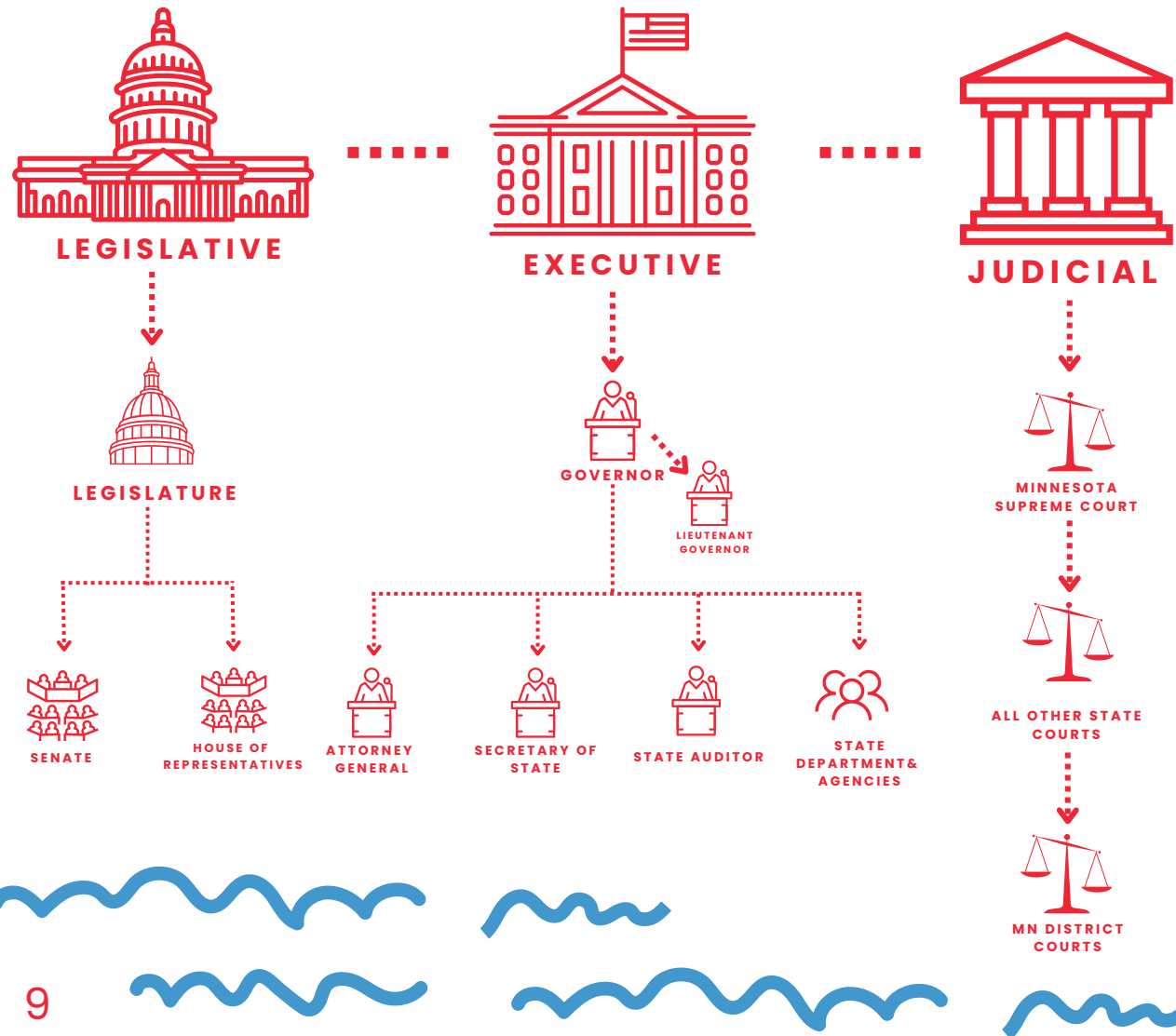
HOW DO THEY INTERACT?

NATIONAL/FEDERAL



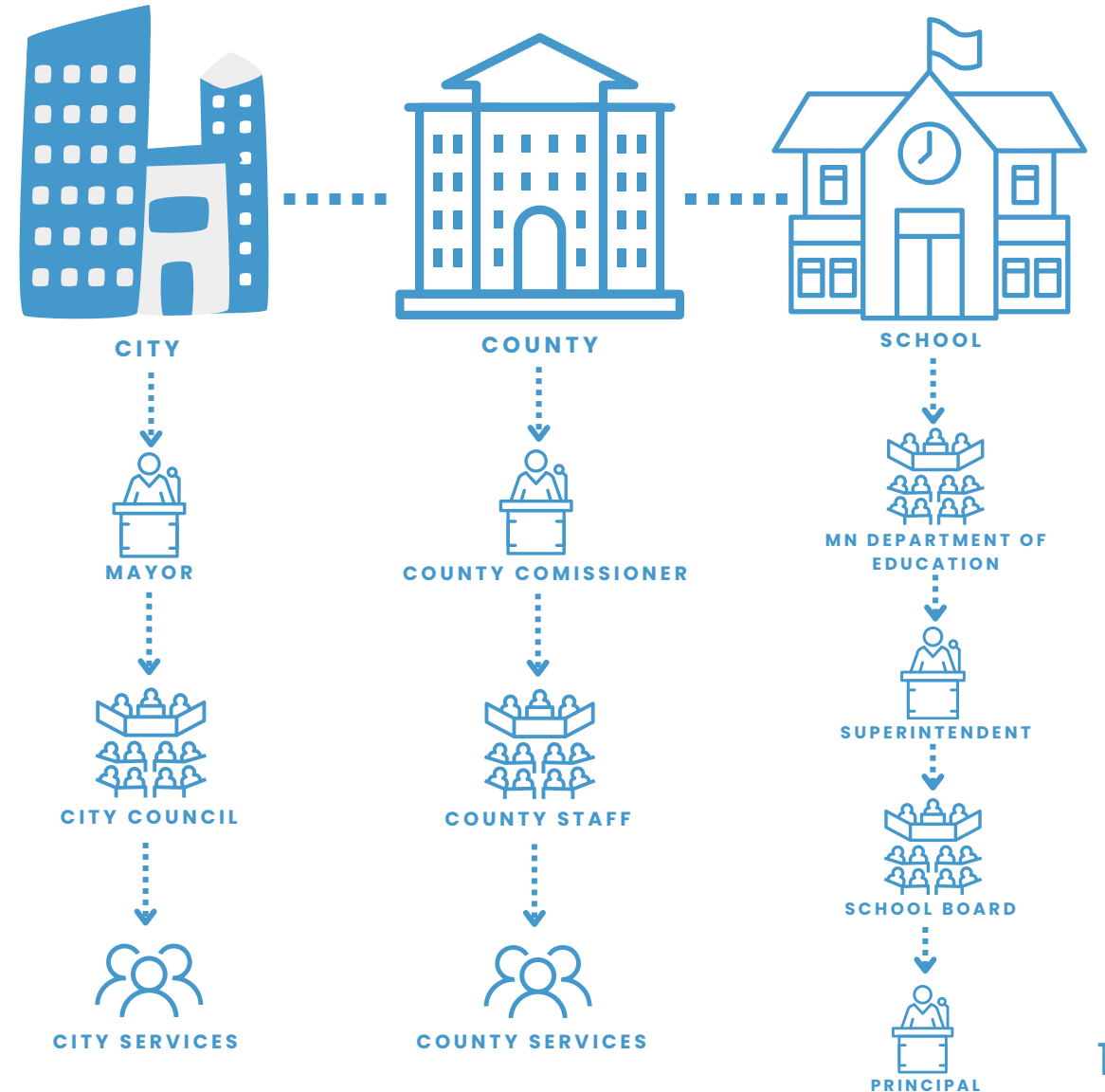
HOW DO THEY INTERACT?

STATE



HOW DO THEY INTERACT?

LOCAL & MUNICIPAL



2023

ELECTIONS

THIS YEAR MINNESOTA HAS COUNTY, SCHOOL DISTRICT, & MUNICIPAL ELECTIONS

City officers, School board members, Township officers, & local questions may be on your ballot

GET READY TO VOTE

- To see how these positions will impact you: see page 6
- To see ways to vote: see page 4
- To register to vote: visit sos.state.mn.us

To see who is on your ballot, visit sos.state.mn.us

My **VOTE** is My **Voice**

2023 ELECTION TIMELINE



Early voting & Vote by mail begins



Last day to register to vote in advance



Extended early voting in-person hours



Election Day!

