



*Holding Power Accountable*



Welcome!

The presentation will begin at 12:02 p.m.

Say Hi! Please drop your name, org, and where you're from in chat!



# LOCAL REDISTRICTING TRAIN-THE- TRAINER FOR COMMUNITY BASED ORGANIZATIONS



**Partnership for the  
Advancement of  
New Americans**



# Agenda

- Welcome and Purpose (12:02 p.m.)
  - Jonathan Mehta Stein, Executive Director, California Common Cause
- Overview of Local Redistricting Timeline (12:05 p.m.)
  - Lori Shellenberger, Redistricting Consultant, Common Cause
- How to Map Communities of Interest (12:55 p.m.)
  - Jeanine Erikat, Policy Associate, Partnership for the Advancement of New Americans (PANA)
- Break (12:55 p.m.)
- How to Use Online Mapping Tools (1:00 p.m.)
  - José Del Río III, Local Redistricting Advocate, California Common Cause
- Legal Red Flags to Look Out For (1:25 p.m.)
  - Jonathan Mehta Stein, Executive Director, California Common Cause
- What Redistricting Resources Are Available (1:40 p.m.)
  - José Del Río III, Local Redistricting Advocate, California Common Cause
- Closing and Next Steps (1:55 p.m.)
  - Jonathan Mehta Stein, Executive Director, California Common Cause



# Overview of the Local Redistricting Timeline

Presented By: Lori Shellenberger





# So Much Redistricting: Who, How, When?

- State (Assembly, Senate, Board of Equalization, and Congressional Districts)
- Local:
  - County Boards of Supervisors
  - Some Cities and School Boards
  - Some Special Districts
- Focus today is how to engage in local redistricting



# PHASES OF REDISTRICTING: WHAT THE REDISTRICTING BODY SHOULD BE DOING

- **Phase I: Planning and Outreach (now!)**
  - Website, determine line drawer/consultant, timeline and hearing schedule
- **Phase II: Community of Interest (COI) testimony (July – Sep)**
  - At least one, but ideally more public hearings
  - Should be doing Voting Rights Act analysis
- **Phase III: Line drawing and public input on draft maps (Oct – Dec).**
  - Should be starting with a blank slate, as opposed to simply making population adjustments to existing boundaries
  - Post draft maps no earlier than 3 weeks after state adjusted data is released



# PHASES OF REDISTRICTING: WHAT ORGANIZATIONS CAN DO

- **Phase I: Outreach, Education, and COI Mapping (now)**
  - Check in on your local jurisdiction's planning and timeline
  - Redistricting 101 and community mapping tools
  - Lots of resources out there – don't reinvent the wheel!
  - Consider coordinating COIs and/or mapping with partners

A map of the United States is shown in the background, with a blue overlay on the right side. The text "PHASES OF REDISTRICTING: WHAT ORGANIZATIONS CAN DO" is written in white, bold, uppercase letters across the top.

# PHASES OF REDISTRICTING: WHAT ORGANIZATIONS CAN DO

- **Phase II: Present COI testimony (July – Sep)**
  - Assist and train community members w/ COI testimony
  - Turnout for COI hearings; submit written testimony and COI maps
  - Consider presenting COI or map as a group
  - Consider communications strategies





## PHASES OF REDISTRICTING: WHAT ORGANIZATIONS CAN DO

- **Phase III: Line drawing and public input on draft maps (Sep – Dec)**
  - Engage community in draft map review
  - Coordinate review of maps with partners
  - Organize feedback and turnout for input on draft maps



# Questions?





# Partnership for the Advancement of New Americans

*This presentation was adapted with permission from materials provided by Common Cause and the Black Census and Redistricting Hub*

## How to Map Communities of Interest

Presented By: Jeanine Erikat, Policy Associate at PANA



# Agenda



**Partnership for the  
Advancement of  
New Americans**

- How to host a COI workshop
- How to prepare community testimony
- Example of COI testimony



# How to Host a COI Workshop



Partnership for the  
Advancement of  
New Americans

- Assess technological, cultural, linguistic needs of your community
- Cater it to community needs, policy concerns, and interests



City Heights Breakout Room

How would you describe where your community is? Where are the boundaries or borders? What are the main streets and landmarks? Where does it begin or end?

**borders**

University Avenue

**where is our community?**

N of 94, E of 805, S of El Cajon Blvd, W of Chollas Blvd

**main streets & landmarks**

El Cajon Blvd for sure!!

city heights library!



Crawford High School

I don't live in city heights, but it has a diverse community.

colina park

Oak Park

All's chicken & waffles



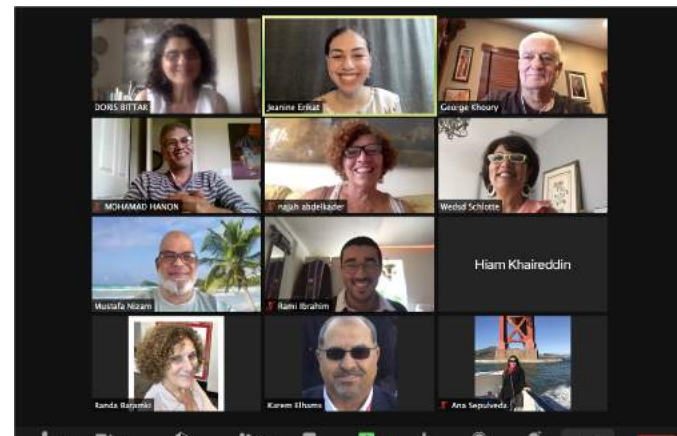
# How to Prepare Community Testimony?



**Partnership for the  
Advancement of  
New Americans**

Imagine describing your community to a friend who wants to move there...

- Who lives in your community?
- What kinds of things do they do for a living?
- What kind of housing is common?
- Do you have common interests in any local
- political issues, like schools, housing, crime,
- transit, health, land use, environmental
- conditions, or other issues?
- Do you have a common race or ethnicity?
- Immigration history? Language spoken?
- Does your community have shared socioeconomic characteristics, like income level
- or education level?
- Does your neighborhood have celebrations or traditions, like street



# How to Prepare Community Testimony?



**Partnership for the  
Advancement of  
New Americans**

- **SAMPLE OUTLINE:**

- Introduction
- First and Last Name
- Where you live in El Cajon
- How long you've been living in El Cajon
- Describe the characteristics of your community
  - Religion, ethnicity, shared language, socio-economic status, holidays, etc.
- WHY: Why are you uplifting your community/ Why do you care/ Why is it vital to you/Why now?
- Closing: Restate how important it is to protect our community and why it is important to keep this community together (the "why")
- Say, "Thank you"



# Example of COI



**Partnership for the  
Advancement of  
New Americans**

My name is John Resident and I live in Ahwanee, California up in the foothills towards Yosemite. We represent congressional district number four, assembly state assembly district five, and state senate district eight.

As mountain area residents and businesses, we have a unique culture much different than the incorporated cities of the urban areas of the bay area; the coastal regions; and the big cities like San Francisco, Sacramento LA, and so forth. We have huge national forests, ranching, farming, vineyards, and a lot of open spaces.

Some of the major issues that we have are forest management. We have tremendous problems with fire so, we want somebody that represents us that understands the issues of proper forest management.

Also, water and drought and water storage - we don't want representatives from large metropolis areas who don't understand water storage; the importance of water storage; or building of dams to get rid of or to mitigate against the drought.

Essentially what I would like to do is recommend is that because district 4, 5, 8 represent the mountain communities, and because mountain area residents and businesses have a unique culture that's different than large cities, I respectfully request that these districts continue to represent the mountain community and essentially remain the same or nearly the same as they are currently, and this will allow a fair and equitable solution for our residences.





THANK YOU





Questions?





Break



# How to Use Online Mapping Tools

Presented By: José Del Río III





# Local Redistricting In California



- Free mapping apps that allow people to draw their community:
  - [DrawMyCACommunity.org](http://DrawMyCACommunity.org)
  - [DistrictR.org](http://DistrictR.org)
- Live Demonstration



**Questions?**



# Legal Redistricting Red Flags to Look Out For

Presented By: Jonathan Mehta Stein







# Red Flags To Watch For As District Lines Are Drawn





## Red Flags to Watch For – Line Drawing

- Is a large POC community being ignored?
- Is a large POC community being split into lots of different districts?
  - E.g. 35% of every district but 50+% in none.
- Is a large POC community being packed into one districts?
  - E.g. 80% in one district instead of 55% in two.

A background image showing a map of various district boundaries in shades of blue. The title text is overlaid on the right side of this map.

## Red Flags to Watch For – Line Drawing

- Is a city splitting a neighborhood into multiple districts?
- Is a county splitting up a city into multiple districts?
- Is a city or county splitting up (or just ignoring) a COI with tons of testimony/documentation/support?



## Red Flags to Watch For – Line Drawing

- Is compactness or following easily identifiable boundaries being treated like a top priority?
  - Is “simple shapes” or “clean lines” being used as a justification for ignoring community testimony or COIs?



## Red Flags to Watch For – Line Drawing

- Is protecting incumbents clearly motivating district lines?
- Is empowering one political party or disempowering another political party clearly motivating district lines?





# What To Do About It

- Gather specific evidence. E.g. a bad map chosen over a good map, problematic comments from Supervisors, specific community split by district lines.
- Contact redistricting experts/lawyers or a civil rights group.
- Asian Americans Advancing Justice, MALDEF, NALEO, Black Census and Redistricting Hub, ACLU



# Red Flags To Watch For In The Redistricting Process





## Red Flags to Watch For - Process

- No community outreach
- No community outreach to limited-English speaking communities and ethnic media
- No information about redistricting online



A decorative header image featuring a stylized map of the United States in shades of blue. The map is composed of various colored regions, with a darker blue area on the right side. The title text is overlaid on this image.

# Red Flags to Watch For - Process

- Fewer than four COI hearings
- Hearings are not ADA accessible
- No language translation at hearings, despite presence of large community of non-English speakers
- No notice or very limited notice of COI hearings



# What To Do About It

- Again, gather specific evidence.
- Contact redistricting experts/lawyers or a civil rights group.
- Asian Americans Advancing Justice, MALDEF, NALEO, Black Census and Redistricting Hub, ACLU
- But also, California Common Cause or League of Women Voters of California or Advancement Project CA



# Red Flags to Watch for with Independent Commissions





# Red Flags To Watch For With Independent Commissions

- City Councilmembers or County Supervisors interfering in the process
- City or County staff guiding meetings or commission decisions too aggressively or with a slant toward status quo districts
- City attorney or county counsel advising commission in a way that slants process towards incumbents or status quo districts



Questions?



# CA Redistricting Resources

Presented By: José Del Río III





# Government and Jurisdiction Websites



- CA State:
  - [Wedrawthelinesca.org](http://Wedrawthelinesca.org)
- LA County:
  - [Redistricting.lacounty.gov](http://Redistricting.lacounty.gov)
- LA City:
  - [Redistricting2021.lacity.org/LACCRC](http://Redistricting2021.lacity.org/LACCRC)
- Special Districts (LAUSD):
  - [redistricting2021.lacity.org/LAUSDRC](http://redistricting2021.lacity.org/LAUSDRC)



# CHARGE HUB Resources

- [RedistrictingCommunityCollege.com](https://RedistrictingCommunityCollege.com)
  - Upcoming training dates:
    - **Redistricting Community College**
      - July 15th, 2021 from 3 PM to 5 PM PST
    - **Next Level Organizing (102) – Activism for Districting. Using Scripts**
      - July 17th, 2021 from 10 AM to 12 PM PST
    - **Prep for Litigation**
      - July 22nd, 2021 from 10 AM to 11 AM PST

A map of California is shown in the background, with a blue overlay on the right side. The text "California Common Cause Local Website" is written in white on the blue overlay.

# California Common Cause Local Website

- California Common Cause Website:
  - [Commoncause.org/localredistricting2021](https://commoncause.org/localredistricting2021)
  - Materials Available:
    - Trainings, Webinar, Outlines, Templates





# California Common Cause Redistricting Advocate

- Contact:
  - José Del Río III - [Jdelrio@commoncause.org](mailto:Jdelrio@commoncause.org)
- Redistricting Office Hours (July – Sept):
  - Every Wednesday at 4:00 – 5:00 p.m. PST
- Individualized 1:1 Assistance and Trainings:
  - For your jurisdiction
  - For your organization



Questions?



# Thank You!



Partnership for the  
Advancement of  
New Americans